



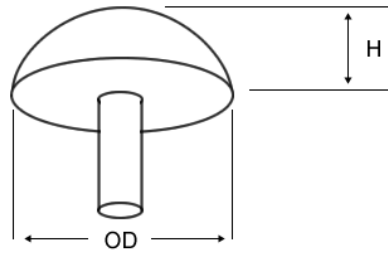
Universal Products: Bump Stops

Round Base – button and cone styles.....	Page 2
Trapezium styles or square/rectangular base.....	Page 3
Hollow Styles.....	Page 4
9.9137.....	Page 5
SF 2392K.....	Page 5

Round Base – button and cone styles

All 3/8 UNC X 1" stud

90 shore A

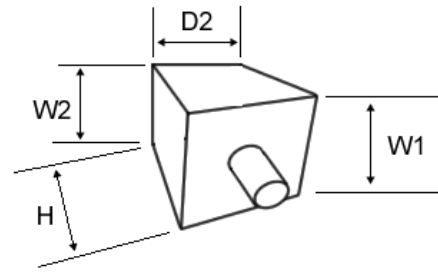


SuperFlex Part Ref	OD	H
9.9121G	1.625"	0.728"
9.9102G	2.0"	0.75"
9.9132G	2.0"	0.6"
9.9116G	2.0"	0.95"
9.9103G	1.5"	1.5"
9.9101G	1.935"	2.132"
9.9117G	2.89"	1.0"



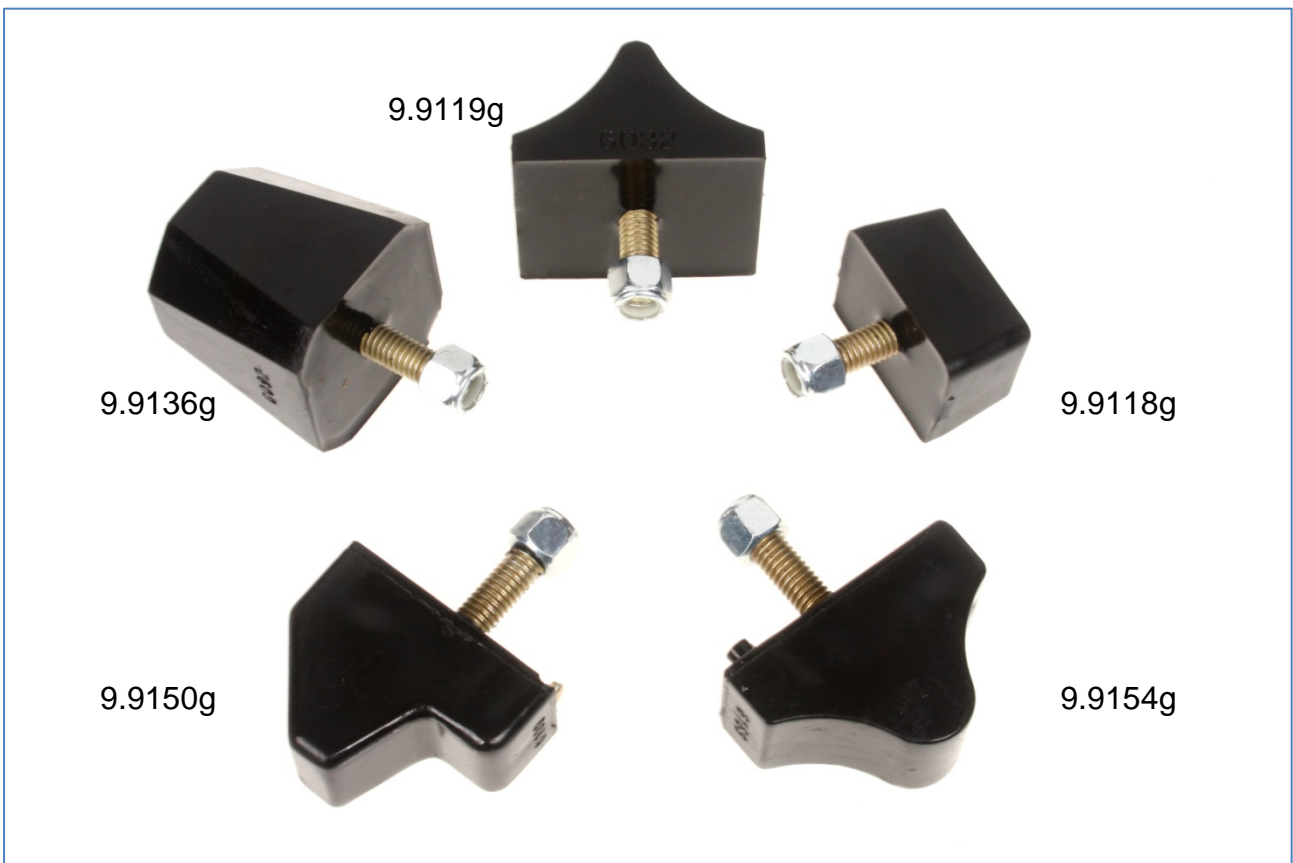
Trapezium styles or square/rectangular base

All 3/8 UNC X 1" stud

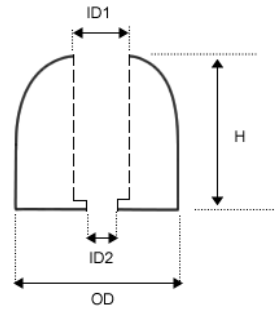


SuperFlex Part Ref	H	W1	W2	D1	D2	Hardness
9.9118G	0.92"	1.875"	1.7"	1.365"	1.19"	90 shore A
9.9150G	1.827"	1.13"	1.115"	1.827"	0.509"	70 shore A
9.9154G	1.69"	1.14"	1.12"	2.535"	0.8"	70 shore A
9.9119G	1.81"	2.0"	2.0"	2.39"	0.375"	70 shore A
9.9136G*	2.0"	2.0"	1.75"	2.0"	1.75"	90 shore A

* Note octagonal face approx 1.75" across flats



Hollow Styles



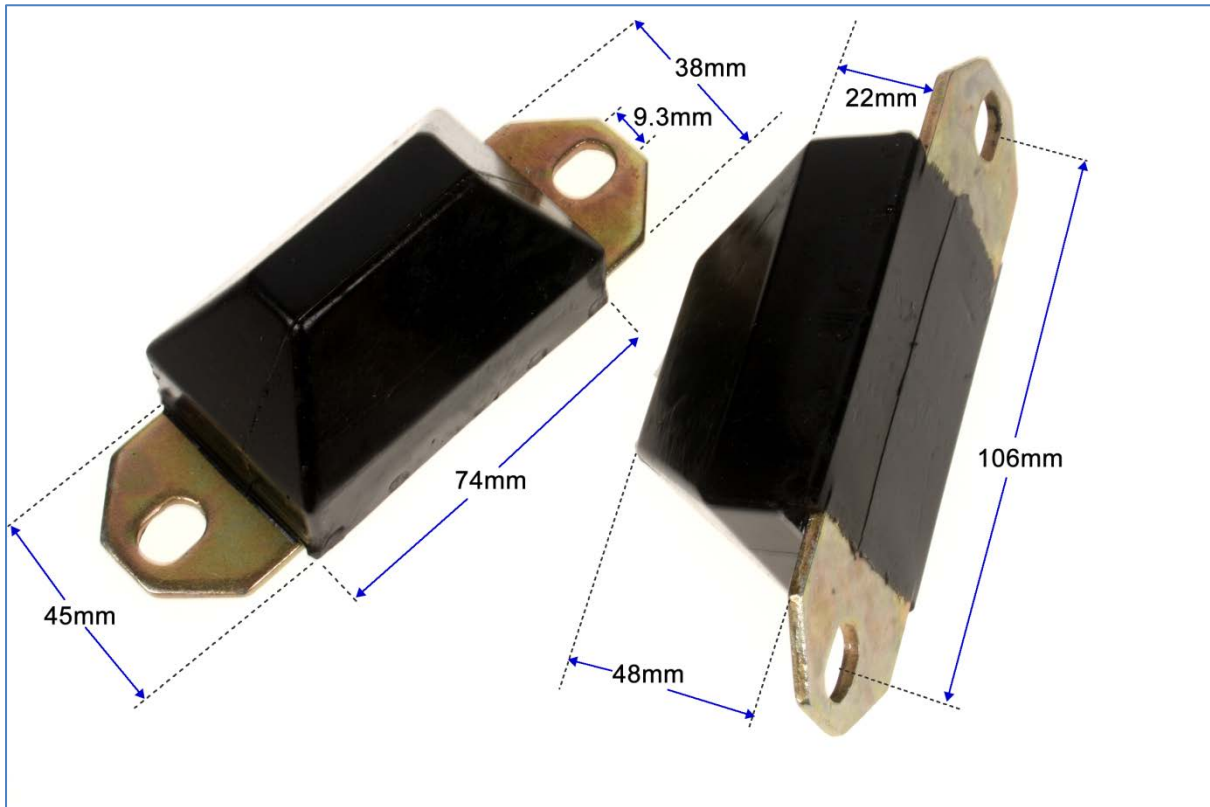
SuperFlex Part Ref	OD	H	ID1	ID2	Hardness shore A
SF0104*	2.4"	1.868"	0.945"	0.822"	70
9.9135G	2.4"	2.5"	0.75"	0.44"	70
9.9138G	2.25"	1.8"	0.8"	0.505"	90
9.9143G	2.41"	3.125"	0.75"	0.438"	80
9.9148G	2.695"	0.8"	0.755"	0.3125	90
9.9149G*	2.02"	0.76"	0.684"	0.387"	90

* NOTE All have a bonded metal insert at ID2 which would typically be retained with socket cap screws except for SF0104 which is recess locating



9.9137G

Hardness 70 shore A



SF 2392K

